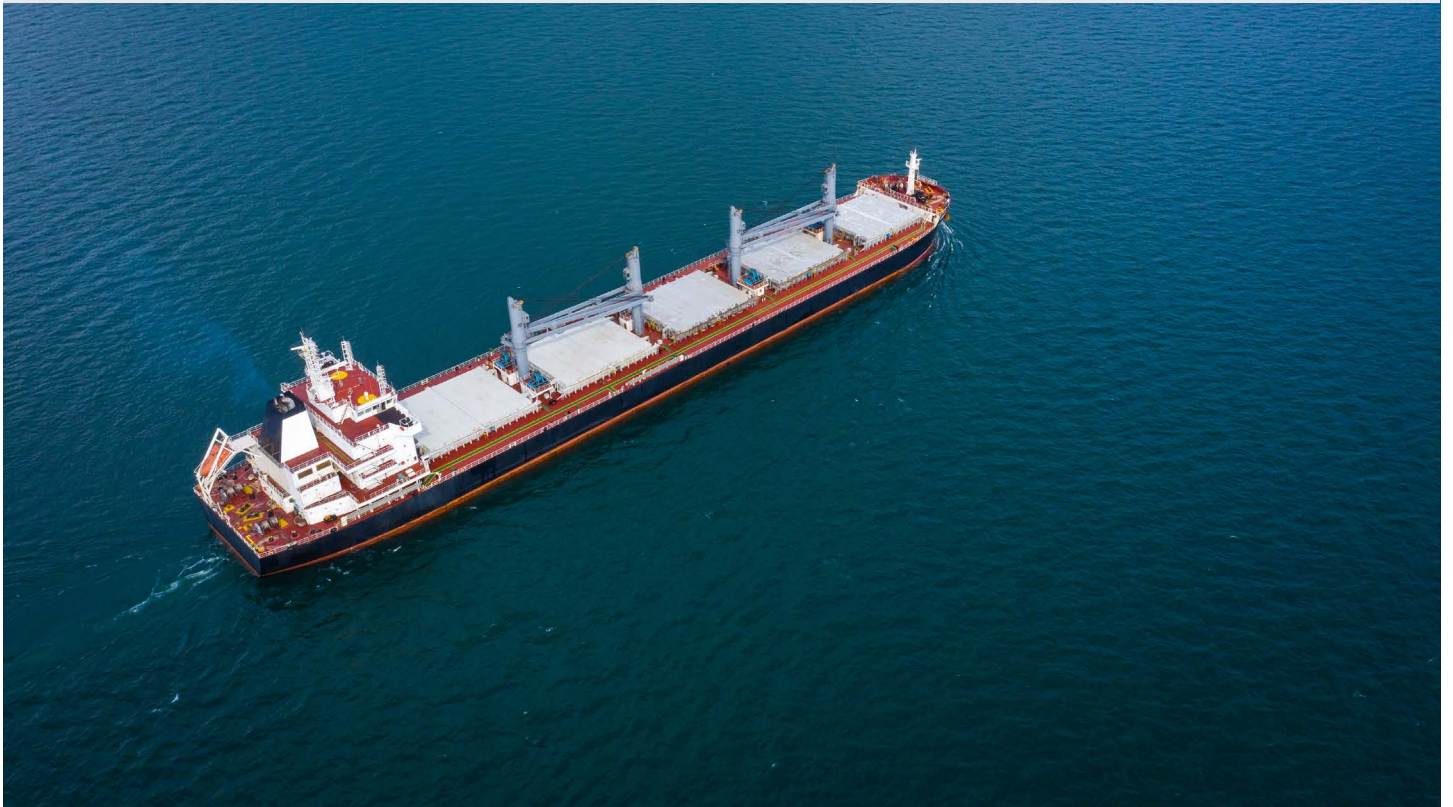


# Boiler Automation

## ELSYS Intelligent Boiler Control System

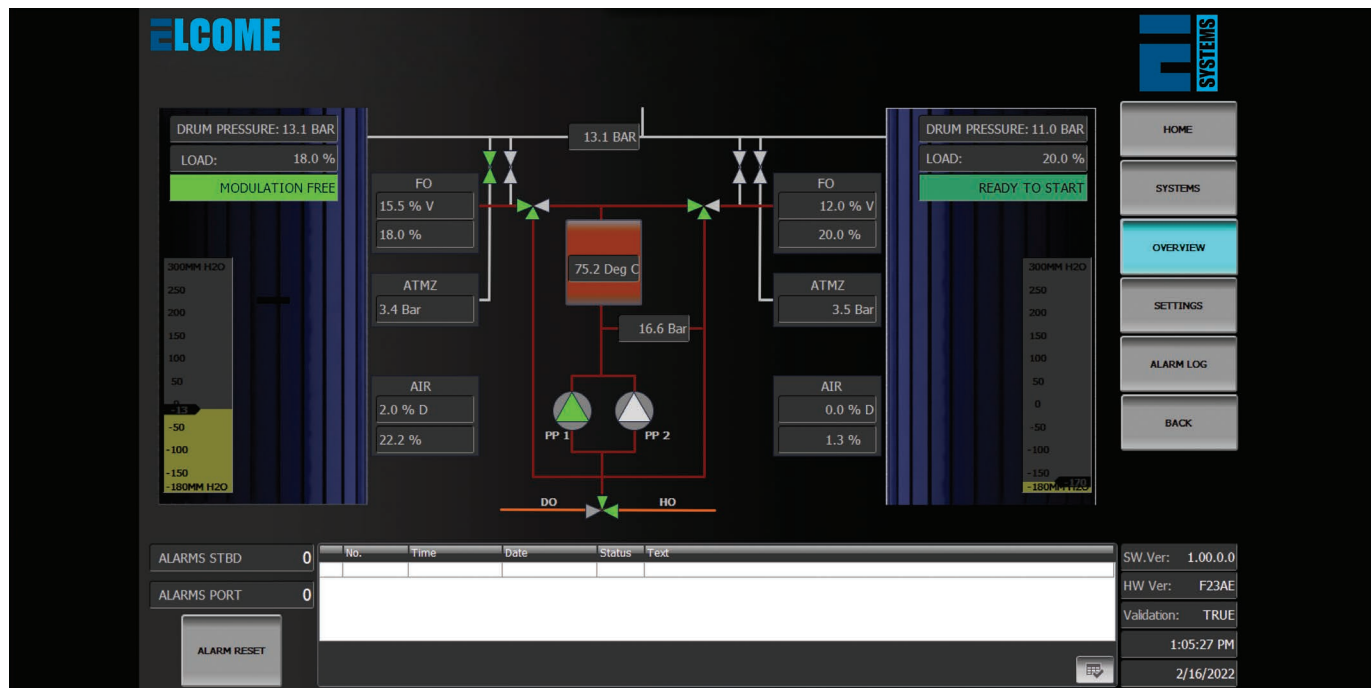


[elcome.com](http://elcome.com)

**ELCOME**

# Intelligent Boiler Control System

COMPREHENSIVE MANAGEMENT AND COMBUSTION CONTROL SYSTEM FOR AUXILIARY, COMPOSITE AND EXHAUST GAS BOILERS FOR SHIPS.



Elcome, in collaboration with Gronne Technologies, has developed a distributed control system (DCS) based boiler automation system to take full advantages of a plant's productivity and improve operations by precisely controlling fuel and combustion air. The result is maximum efficiency gain, reduced operating costs and lower emissions to the atmosphere.

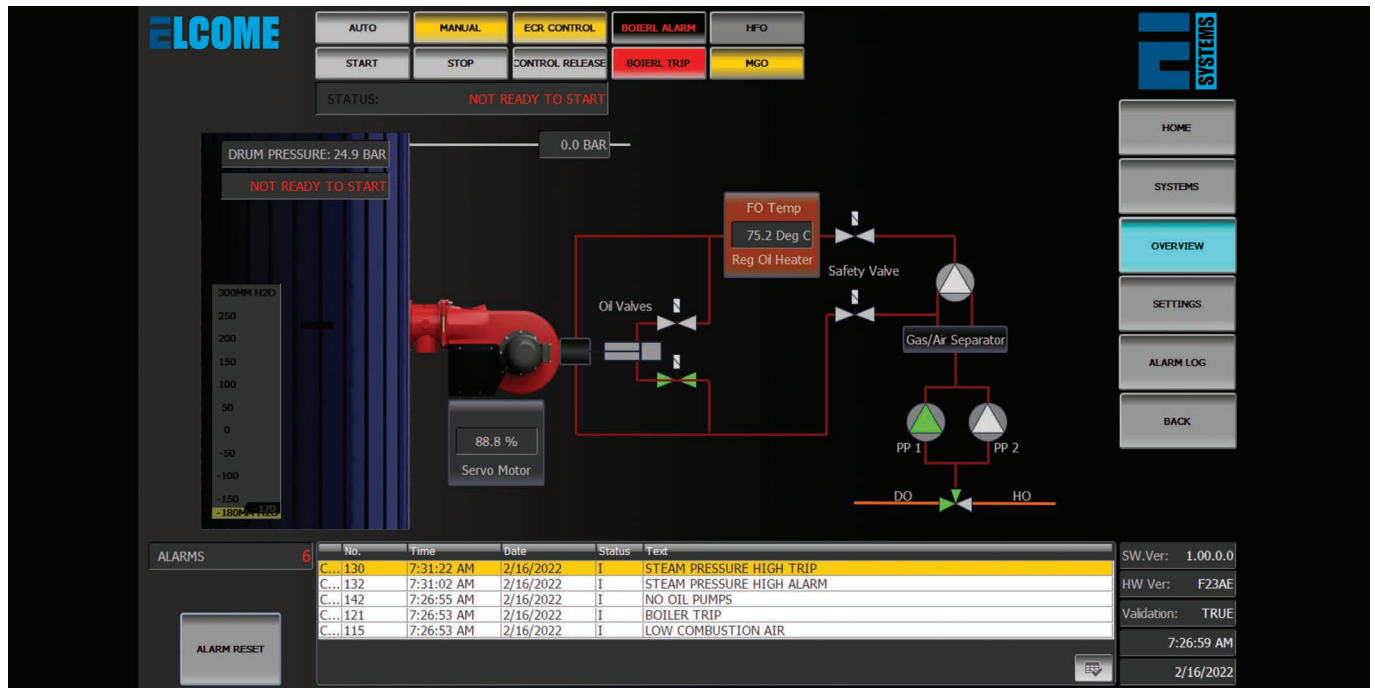
Designed and developed by a team of experienced engineers and boiler technicians, the ELSYS Intelligent Boiler Control System is an intuitive and highly reliable solution with customizable features to improve boiler operations and uptime.

The ELSYS Intelligent Boiler Control System is built on a future-proof architecture designed to help you meet the evolving needs of your boiler processes and to achieve high reliability and enhance boiler safety on board.



Our approach is to ensure customers are at the center of our brand-agnostic approach. As a turnkey solutions provider, we provide end-to-end service for our clients including design, engineering, system integration, installation and upgrade of control systems for a wide range of auxiliary, composite, and exhaust gas boilers for marine applications.

# Benefits



The ELSYS Intelligent Boiler Control System delivers value by improving the plant's integrity, optimizing resource usage and reducing the total cost of operation and maintenance.

- Seamless integration with third-party interfaces.
- Scalable system with modular control panels.
- Reliable hardware components.
- Reduced downtime and easy troubleshooting.
- Alarms and trends with custom configurations.
- Self-diagnostic testing process to assist fault-finding and service.
- Optimized energy requirements.
- Reduced greenhouse gas emissions.
- Real-time remote access and condition monitoring (optional).

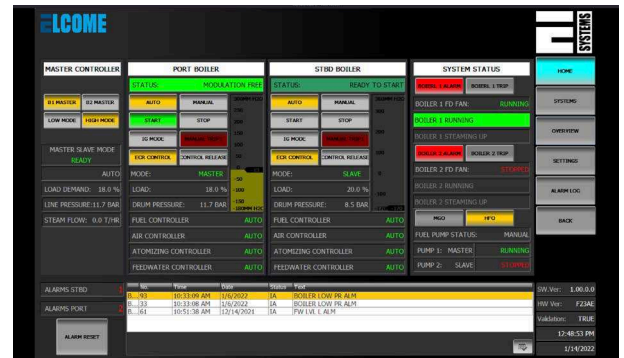




# Scope of supply

The ELSYS Intelligent Boiler Control System was developed by Elcome and Gronne Technologies based on a broader solution portfolio and profound understanding of the energy requirements and power management on ships. We offer end-to-end solution for efficient operation and control of boilers.

- Design and build state-of-the-art bespoke control panels.
- Seamless retrofit and upgrade from existing systems of all major brands.
- Design and testing of the graphical user interface (GUI) in accordance with customer requirements and processes.
- Type-approved controller with firmware upgrades and extended product lifecycle.
- Broad range of critical spares and replacement parts for boiler controllers and burners to support leading boiler brands.
- Pre-inspection, engineering and document management for classification approvals.
- Installation and commissioning with minimal disruptions to operations.



# Service and retrofits

Elcome provides 24/7 service and technical support in any port around the world with a network of 23 offices in 11 countries. The range of services includes repair, maintenance and upgrade of auxiliary, composite and exhaust gas boiler management systems. Our team of experienced engineers and technicians can perform complex repair jobs in port or at sea.



## Company profile

Elcome provides 24/7 service and technical support in echnology solutions provider. The company is headquartered in Dubai and is one of the world's largest maritime companies with a diversified portfolio of technologies and solutions.

Elcome is a specialist turnkey solutions provider of navigation, communication, automation, control, instrumentation and safety systems. The company designs and integrates a broad array of electronic sensors and systems for marine, offshore, energy and naval applications.

Elcome's operations span across 23 offices in 11 countries with over 500 employees for defense, oil & gas, offshore, merchant shipping and yachting industry segments. Elcome is certified to ISO 9001:2015, ISO 14001:2015 and OHSAS 18001:2007 by DNV.





## HEADQUARTERS

**ELCOME INTERNATIONAL LLC**  
Dubai Investments Park 598-1121  
PO Box 1788, Dubai, UAE

P: +971 4 8121333  
E: [sales@elcome.com](mailto:sales@elcome.com)

**UAE - BAHRAIN - EGYPT - INDIA - KUWAIT - OMAN - QATAR - SAUDI ARABIA - SINGAPORE - SPAIN - SRI LANKA**



[elcome.com](http://elcome.com)