



## FEATURES

- **Rugged Bulkhead Mounted Bearing Repeater**
- **Includes MD69BR Precision Dual-Scale 36:1 Repeater**
- **Includes Fully Gimballed Bearing Repeater Mount**
- **Includes Integral Terminal Box**
- **Built-in Dimmer Control**
- **NMEA 0183 Digital Connection**
- **Fully sealed to IEC 60945 Exposed Area Classification**

## COMPASS & HEADING / BEARING REPEATERS

# MD69/22 BULKHEAD MOUNT BEARING COMPASS REPEATER

SKU: F069033

[View Online >](#)

## OVERVIEW

The MD69/22 Bulkhead Bearing Repeater Assembly is a complete bracket-mounted Bearing Repeater solution with fitted precision, dual-scale MD69BR Bearing Repeater on gimbal and trunnion mount. Fully sealed to IEC 60945 Exposed Area Classification and suitable for wheelhouse and exterior environments, including weatherproof terminal box to connect with the vessel's cabling.

The back plate of the bracket has 6x holes suitable for M8 fixings, for securing to a bulkhead.

The MD69/22 Bulkhead Bearing Repeater Assembly from Marine Data: Flexible in application, easy to install and simple to maintain.

## APPLICATIONS

- To locate a rugged Bearing Repeater on an interior or exterior bulkhead where space may be limited and provide terminations for ships cabling
- To provide a platform suitable for taking bearings using a Marine Data Azimuth device or bearing circle

## ACCESSORIES



**MD69AZI**  
Azimuth Sight



**MD69BC**  
Bearing Circle



**MD60A2K**  
Telescopic Alidade



**MD69CPC**  
Protective Cover

## RELATED PRODUCTS

[MD69/21](#) - Bearing Compass Repeater in Pelorus Stand

[MD69BR](#) - Bearing Compass Repeater on Trunnion Mount



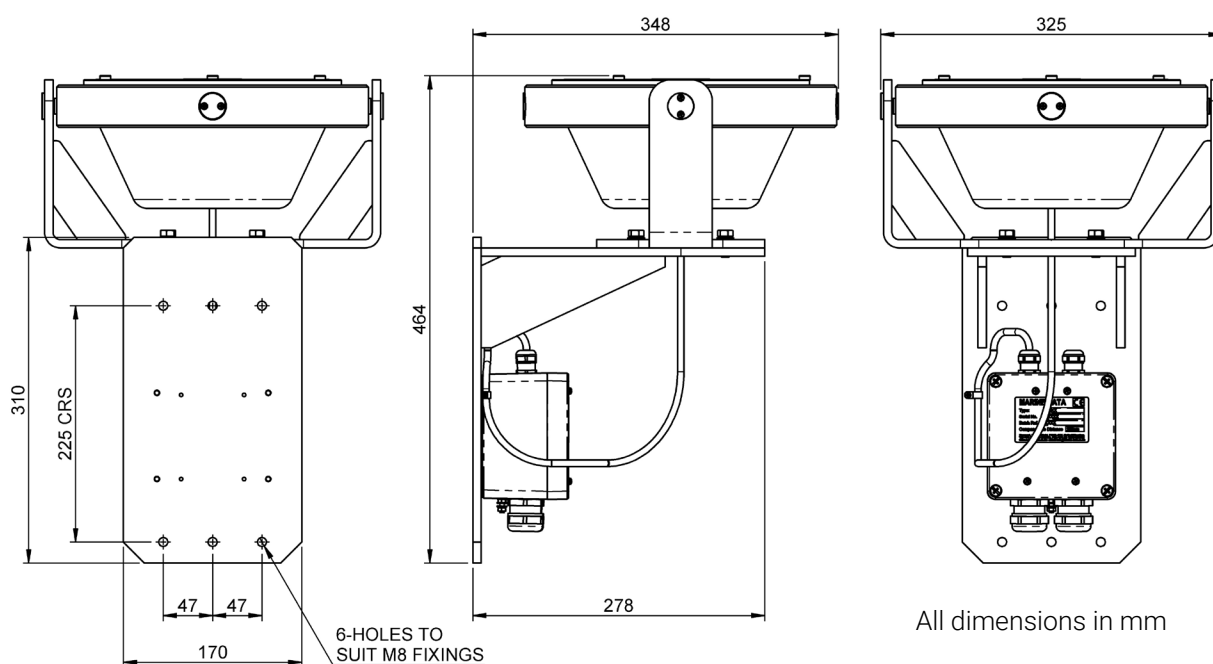
PHYSICAL	
<b>Weight:</b>	10.5 kg including Terminal Box and Repeater
<b>Dimensions:</b>	H 464 mm; W 325 mm; D 348 mm 8mm plate thickness
<b>Repeater Bowl:</b>	Model MD69BR Precision Dual Scale 36:1
<b>Mounting:</b>	6x Ø 8.5 holes suitable for M8 fixings (not supplied)
<b>Connections:</b>	Integral Terminal Box
<b>Construction:</b>	Marine Grade Aluminium, stainless fixings
<b>Finish:</b>	Window Grey (RAL7040) Semi-gloss Powder Coat

ELECTRICAL	
<b>Earth Bond:</b>	M4 stud on cable terminal box
<b>Illumination:</b>	Built-in rotary dimming control 0-24 V dc Red tint illumination colour
<b>Heading Data:</b>	NMEA 0183

ENVIRONMENTAL	
<b>IEC 60945 Equipment Category:</b>	Exposed Area
<b>Operating temp:</b>	-25°C to +55°C
<b>RoHS:</b>	Compliant
<b>Compass Safe Distance:</b>	Standard: 20 cm Steering: 20 cm

OPERATIONAL	
<b>Performance:</b>	± 0.01° resolution
<b>Follow-Up Rate:</b>	20° per second
<b>Gimbal Action:</b>	±45° pitch and roll
<b>Display:</b>	Dual scale 36:1 rotating dial display
<b>Heading LEDs:</b>	Blue = True Heading; Yellow = Magnetic Heading
<b>Resolution:</b>	Outer scale marked at 1°, 5°, 10° & 45°; Inner scale marked at 0.1° & 1°
<b>Illumination:</b>	LED array with local & remote dimming control; red tint
<b>Error Indication:</b>	Loss of valid data: Dial oscillates ±35° about the last known good heading

APPROVALS	
<b>Conforms with:</b>	BS EN 60945:2002 (BSI, 2008) BS EN 61162-1:2016 (BSI, 2016) BS EN 62288:2014 (BSI, 2016) BS ISO 8728:2014 (BSI, 2014) BS ISO 16328:2014 (BSI, 2014) IMO Res. A.424(XI) (IMO, 1979) IMO Res. A.821(19) (IMO, 1995) IMO Res. MSC.36(63) (IMO, 1994) IMO Res. MSC.97(73) (IMO, 2000) IMO Res. MSC191(79) (IMO, 2004)
<b>Type Approval:</b>	DNV



Copyright © 2022 Marine Data Systems Ltd. - MD69-22 Datasheet v06r04

Vittlefields Technology Centre, Forest Road, Newport, Isle of Wight, United Kingdom. PO304LY  
Marine Data Systems Ltd. reserves the right to make changes to its products and specifications without prior notice.